

---

# Introduction

---

Artistic digitizer embroidery software is equipped with a next generation working environment which will excite with its innovative design, 3D integration, intuitive usability and stunning embroidery quality.

Every embroidery creation takes less time and effort to be made, providing you more time to enjoy your creations.

Artistic digitizer is even more. It includes tools for creating cutting, painting and quilting designs. In addition, you can create stencil and designs with crystals/rhinestones. One software for all crafting creations.

All this in dual platforms, MS Windows® and Mac OS®. No more operating system dilemma.



# Installing the software

---

The software can be installed on MS Windows and MAC OS systems. Depending on the system, select the respective installation method.

## MS Windows installation

Insert the Artistic Digitizer installation DVD into your DVD-ROM drive. It is recommended that you close all running programs before you proceed.

If your computer does not have the DVD-ROM AUTORUN feature activated, open Windows Explorer and from the DVD-ROM drive run the setup.exe program.

If you have a link to download the installation file, you can type it in any web browser's URL field and download the file. Extract the installation file from the downloaded zip file by right clicking on it and selecting Extract All... Follow the instructions to extract the installation file, then go to that folder and run the file by double clicking on it.

If you are running the installation on a Windows 7/ 8.1/10 operating system a Security screen will appear with information about the new software and it will ask you if you allow it to be executed. You need to either log in as administrator or select Allow if you are already logged in as administrator.

1. If applicable, keep your Hardware USB Key and cutter unplugged during the installation of the software. Click Next> to continue.
2. When the window with the License Agreement opens:  
Click on the first radio button of the window, confirming that you accept the terms of the license agreement. (CAUTION! PLEASE READ THE TERMS &

CONDITIONS OF THE LICENSE AGREEMENT CAREFULLY). Then click the Next> button.

3. At the next dialog, you can specify where you want the software to be installed. You can change the Installation Folder by clicking on the Browse... button and selecting another directory. Click Next > to continue.
4. At the next dialog, you can select which software components you want to be installed. By default, all components will be installed. Uncheck those you do not require. Click Next> to continue.
5. The software is now ready to install. Click Install to begin. During the installation, you can click the Show details button to view the installation process.
6. During the installation process, multiple dialogs might appear requesting access to install embroidery machine drivers. Click Install to continue.
7. At some point, you will be informed that the installation is complete. Click Next > to continue.
8. At the next dialog, you will be asked to select the type of your Key.  
If you have a USB key, select the I have a USB key option and plug the Hardware Key into a free USB port. Click Next>. Go to step 10.  
If you have a Software key select the I have a Serial number and an Activation code option and click Next>.
9. The Software key window will appear. Type the Serial number of your key and the Activation code in the respective fields and click Activate. The window will automatically close.
10. Wait until the installation recognizes the key and proceed to the next step.
11. The Registration information window will appear. This is a form that you should fill in with valid information and submit by clicking on the Register button.

12. The final dialog informs you that Artistic Digitizer® installation and registration is complete. Click Finish to end the installation.
13. If you are upgrading from a previous version, the USB Key Remote Upgrade Utility will appear. (NOTICE: If you have already upgraded your USB Key click Cancel.) Please insert one (or more) 16-bit Upgrade codes that you have received from your distributor in the respective Code fields, make sure that you are connected to the internet and click the Upgrade button.

If the upgrade is completed successfully the relevant message will appear. Otherwise, please contact your dealer for support.

If you prefer to upgrade your USB Key at a later stage, you can access the USB Key Remote Upgrade Utility from Start > All programs > Artistic Digitizer 1.0 > Key Upgrade.

Now Artistic Digitizer® software is installed on your computer. To run the software, open the Windows Start menu, click on All Programs > Artistic Digitizer 1.0 and then click on Artistic Digitizer 1.0.

## MAC OS installation

Insert the Artistic Digitizer installation DVD into your DVD-ROM drive. It is recommended that you close all running programs before you proceed. The installation will start automatically.

You can download the installation file from the following webpage:

**[http://www.janome.co.jp/e/e\\_downloads/artistic\\_installation\\_user\\_guide.html](http://www.janome.co.jp/e/e_downloads/artistic_installation_user_guide.html)**


1. On the Dock area you can see the download progress.

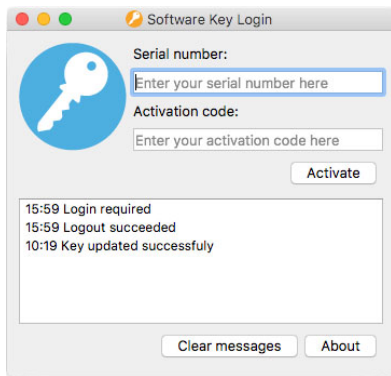
2. Once the download is complete, the download icon will change.
3. If you click on the Downloads icon, then a list with the latest downloaded files appears on top. Click on the Artistic.dmg file.
4. The file you've downloaded is a disk image and by clicking on Artistic.dmg it is mounted onto your Mac and you can see its contents. On your desktop, there is an icon for the mounted disk image. If you accidentally close the Finder window, you can start again by double clicking the Artistic Digitizer icon on your desktop.
5. In order to perform the installation of Artistic Digitizer you must drag the 2 icons onto the Applications folder icon that you can see.
6. First drag the Software key application onto the applications folder icon.
7. Then drag the DRAWings application onto the applications folder icon.  
**Notice:** Do not double click on the icons because this will run the program through the mounted media and it will not be installed.
8. Installation is complete, and at this point you can Eject the installation media. Right click on Artistic Digitizer on your Desktop and use Eject option.
9. In order to Run the software, start Finder and navigate to Applications folder. First double click on the Software key application in order to license the software.
10. You will get a warning that this software was downloaded from the internet, click Open to proceed. This only happens the first time that you run the application.
11. The Software key login window will appear. Now you need to type the Serial number and the Activation code into the respective fields. To proceed with the activation, you need to be connected to the internet. After typing the key and activation code press Activate.

12. After successful activation, you get a message Key updated successfully.
13. Now you are ready to start Artistic Digitizer, go to Applications folder and locate DRAWings icon. Double click on this icon to start the software. This happens only the first time that you run the application.
14. You will get a warning that this software was downloaded from the internet, click Open to proceed.
15. You are ready to use the Artistic digitizer.

## Software key

Together with the software you will get a software key that consists of a Serial number and an Activation code. These two numbers can be found in the packaging of the software and they must be inserted in the respective fields of the Software key tool. The Software

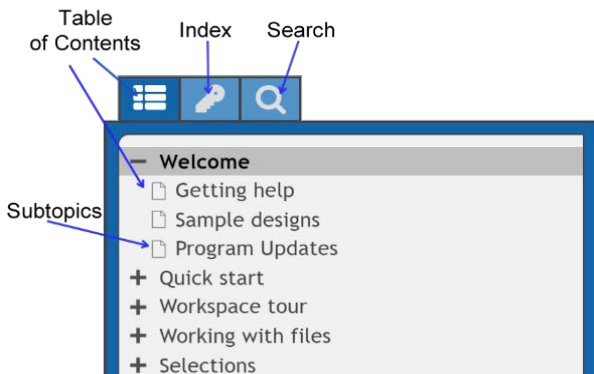
key tool  is installed together with the software and can be found at the bottom right corner of the task bar on MS windows (next to the antivirus) and at the top right corner of the MAC's Menu bar. The Icon color will vary, based on its status. To activate the Software key, you have to insert the Serial number and the respective Activation code.



# Getting Help


---

You can find the User guide, at the Help menu of the software. It is called Help topics and you can access it by pressing F1 shortcut key.



- **Table of contents:** allows you to see all of the information organized by subject. Click top-level entries to view subtopics.
- **Index:** allows you to look up specific terms or concepts in alphabetical order. Type in a word or phrase.
- **Search:** lets you search the full text of the Help for a particular word or phrase

The same manual it is included in pdf file format and can be accessed from:

**MS Windows:** select **Window Icon**  > **All programs > Artistic Digitizer 1.0 > Artistic Digitizer 1.0 manual**

**MAC OS:** select menu **Help > Artistic Digitizer 1.0 manual**

OR online from the following webpage:

[http://www.janome.co.jp/e/e\\_downloads/artistic\\_installation\\_user\\_guide.html](http://www.janome.co.jp/e/e_downloads/artistic_installation_user_guide.html)

---

## Getting Started

---

After installing the software, you are now ready to create your first design. This section contains a quick overview of the software's features and how you can use them to create your first designs.

Artistic digitizer is a very easy to use software that anyone can learn easily. Spend some time to reading the software's instructions and you will realize how easily and quickly you can create complete designs.

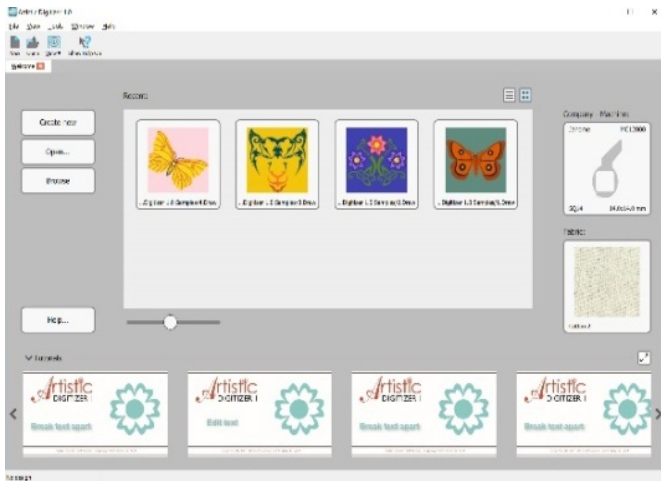




## Welcome page

Whenever you open the software the Welcome screen appears. From here you can select what to do in the software. You can Create new designs, Open existing, launch the design Browser, set the default Fabric and Hoop and view training video Tutorials.

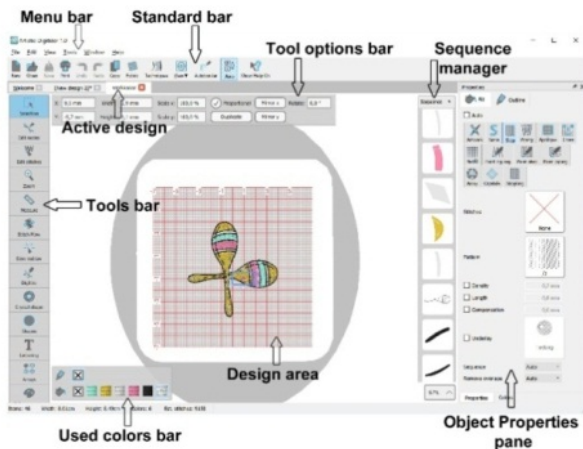
Click on any of the sample designs in the Recent designs list to open.



## Workspace

The main application window consists of a variety of menus, toolbars, wizards and dialog windows. All these together with the design tabs are called a workspace. The way that the workspace components and windows are placed is fully customizable. When opening the application for the first time all these tools are placed by default in a way to help you focus on your task (creating, editing and viewing designs).

Make any arrangement on workspace components in order to have a workspace that matches your personal preferences.



# Quick Reference Card

General		
	MS Windows	MAC OS
New document	Ctrl+N	Cmd+N
Open document	Ctrl+O	Cmd+O
Save document	Ctrl+S	Cmd+S
Save As document	Ctrl+Shift+S	Cmd+Shift+S
Print document	Ctrl+P	Cmd+P
Export to image	Ctrl+Shift+E	Cmd+Shift+E
Export to SVG	Ctrl+Alt+E	Cmd+Alt+E
Help	F1	F1
Show Help on...	Shift+F1	Shift+F1
To Editor...	Ctrl+E	Cmd+E
To Dropbox	Ctrl+D	Cmd+D

Selection		
	MS Windows	MAC OS
Select all	Ctrl+A	Cmd+A
Invert selection	Ctrl+Shift+I	Cmd+Shift+I
Default selection tool	Space	Space
Top object	Ctrl+Home	Cmd+Home
Bottom object	Ctrl+End	Cmd+End
Next object	Tab	Tab
Previous object	Shift+Tab	Shift+Tab

Modifications		
	MS Windows	MAC OS
Undo	Ctrl+Z	Cmd+Z
Redo	Ctrl+Shift+Z	Cmd+Shift+Z
Select fabric	Ctrl+F	Cmd+F
Edit palette	Ctrl+Shift+L	Cmd+Shift+L
Options	Ctrl+T	Cmd+T
Change Hoop	Ctrl+H	Cmd+H
Optimizer options	Ctrl+Shift+J	Cmd+Shift+J
Divide	Shift+D	Shift+D
Directions	D	D
Repeat last transform	Ctrl+R	Cmd+R
Group	Ctrl+G	Cmd+G
Ungroup	Ctrl+U	Cmd+U
Combine	Ctrl+L	Cmd+L
Break apart	Ctrl+K	Cmd+K
Convert to curves	Ctrl+Q	Cmd+Q
To front one	PgUp	PgUp
To back one	PgDn	PgDn
To front of design	End	End
To back of design	Home	Home

Designing		
	MS Windows	MAC OS
Insert symbol	Ctrl+F11	Ctrl+F11
Delete objects	Delete	Delete
Edit shape nodes	F10	F10
Freehand	F5	F5
Bezier	Shift+F5	Shift+F5
Outline	Ctrl+F5	Ctrl+F5
Rectangle	F6	F6
Trapezoid	Shift+F6	Shift+F6
Ellipse	F7	F7
Pie	Shift+F7	Shift+F7
Polygon	Y	Y
Star	S	S
Text	F8	F8

Align bar		
	MS Windows	MAC OS
Align Left	L	L
Align Right	R	R
Align Top	T	T
Align Bottom	B	B
Align centers Horizontally	C	C
Align centers Vertically	E	E
Same width	Shift+W	Shift+W
Same height	Shift+H	Shift+H
Same Size	Shift+S	Shift+S
Horizontal Spacing	Shift+C	Shift+C
Vertical Spacing	Shift+E	Shift+E

View		
	MS Windows	MAC OS
Properties	Alt+Enter	Alt+Enter
Zoom in	Z	Z
Zoom previous	F3	F3
Zoom all	F4	F4
100% zoom	Shift+1	Shift+1
Hand tool (pan)	H	H
Measure	F9	F9
Ruler	Ctrl+Shift+R	Cmd+Shift+R
Grid	Ctrl+Shift+G	Cmd+Shift+G
Overlapping crystals	O	O

Backdrop		
	MS Windows	MAC OS
Hide	Alt+1	Alt+1
Below Embroidery	Alt+2	Alt+2
Washed-out	Alt+3	Alt+3
After Embroidery	Alt+4	Alt+4